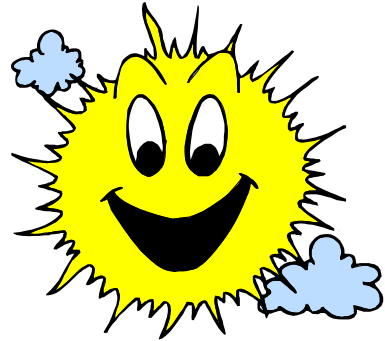


SUNSHINE CORNER PLAY SCHOOL



WHO ARE WE?

Sunshine Corner Play School is an extension of Westside Kids Church and exists to provide quality care and learning experiences for preschoolers, ages 2.5 to 5 years, as well as being a service to moms who need a morning or afternoon out.

WHAT IS OUR PHILOSOPHY?

Children have no greater desire than to find out how the world works. They are on a never-ending quest to discover how they fit into their world. All this can take place in play situations for play is a child's work. If given the tools within a secure and happy environment that provides challenging and exciting activities geared to the developmental stages of the preschooler, children will mature socially, emotionally, physically, intellectually and spiritually.

WHAT IS OUR MISSION?

- To provide an environment where children, ages 2.5 to 5 years, can feel safe, secure and happy while learning to interact with their peers and teachers in an acceptable manner through participation in both large group, small group and individual activities.
- To give children the opportunity to develop creativeness by giving them opportunity to explore a variety of art and craft activities.
- To encourage inquiring minds by providing opportunities for children to discover the world around them so that each child can gain experiences in many varied situations and thereby develop a rich background of knowledge about this world.
- To encourage a spiritual awareness in the heart of each child by creating an atmosphere of love, care and acceptance.
- To encourage children to develop an appreciation for music and literature by introducing them to a variety of songs, rhymes, verses and stories and by having them participate in age appropriate rhythmic activities.
- To provide for the great diversity in the interests of children by giving them the opportunity to explore a variety of activities at the various learning centers.
- To provide large muscle activities that will allow children to expend energy while developing specific skills.
- To provide an atmosphere whereby children will be able to develop self-esteem, self-confidence – “I can do it!” – attentiveness, helpfulness, self-motivation, a desire to learn, responsibility in caring for their environment and an appreciation and consideration of others.



WHAT IS OUR STRUCTURE?

Sunshine Corner Play School operates from 9:15 am to 11:45 am Monday to Friday and from 1:00pm – 3:30pm Monday to Thursday during the months from September to June.

It is open to any child from 2.5 to 5 years of age.

Children must be 2.5 by September of the current school year.

All children participate together during free choice time at the learning centers as well as the circle and teaching times, large muscle activities and outdoor play times.

Children enjoy snack time and story time in a small group setting with others their own age.

Themed crafts, cognitive and fine motor skill development are also done within this small group setting.

Fees – We charge a monthly fee that is based on the tuition ***averaged across the 10 months we are open***, making each monthly payment the same amount regardless of the number of days. (Families are not charged for holiday closures).

Please note that families are charged for what their child(ren) are registered for, not attendance.

Our fees are as follows:

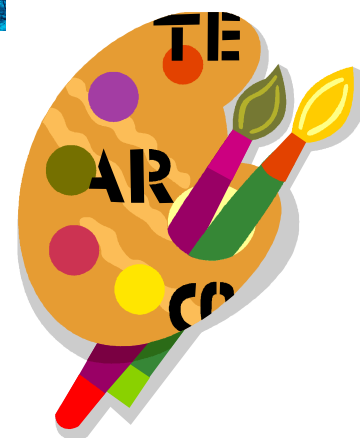
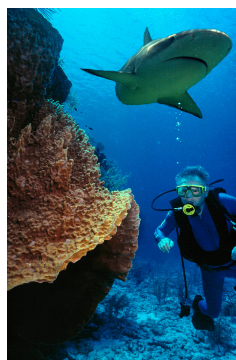
Days registered	Monthly charge
1 day per week	\$ 75
2 days per week	\$145
3 days per week	\$215
4 days per week	\$285
5 days per week	\$355

WHAT IS OUR CURRICULUM?

Sunshine Corner Play School utilizes the curriculum written by Bev Mahabir (the creator of this Play School). It follows the theme approach and includes songs, games, rhymes and story lessons. There is a new theme every 1 to 4 weeks with a new topic each day. All activity centers, large group activities, snacks and large muscle activities reinforce the topic for the day.

The following are examples of themes in the 3 year Curriculum:

- ❖ Autumn Leaves
- ❖ Apples
- ❖ Scarecrows
- ❖ Thanksgiving
- ❖ Pumpkin Time
- ❖ How We Treat Our Friends
- ❖ What Does an Animal Wear?
- ❖ Winter Birds
- ❖ Community Friends
- ❖ Christmas Around The World
- ❖ Under the Sea
- ❖ How Insects Live
- ❖ Changing Colours
- ❖ Growing Up



WHAT IS OUR SCHEDULE?

9:15 – 9:45 1:00 - 1:30	Sign In and Free Time Play Learning Centers include: <ul style="list-style-type: none">• Art – painting, crayons, markers, play dough, construction, special activities• Sensory – sand, water, beans, rice, gravel• Puzzles• Puppets• Creative Play – toys, blocks, etc.• Imaginative Play – home center, camping, etc.• Manipulative Play – construction sets• Listening Center – tapes, books, CD's• Book Corner• Theme Centers – “Curiosity Tables” – to include math, science, sensory games, puzzles, books, pictures, objects, felt boards• Large Muscle Play – balls, wheel toys, tossing games, etc.
9:45 – 9:55 1:30 – 1:40	Clean Up Time – transition to large group time
9:55– 10:20 1:40 – 2:05	Large Group Time <ul style="list-style-type: none">• Greeting Time – Games, Songs, Calendar, Weather Chart, Birthdays Cognitive Development Activity <ul style="list-style-type: none">• Developmental Concept for the Day – Colors, Shapes, Numbers, Letters

10:20 – 10:35 2:05 – 2:20	Washroom Break
10:35 – 11:10 2:20 – 2:55	Snack and Craft/ Cognitive Development
11:10 – 11:20 2:55 – 3:05	Theme Development <ul style="list-style-type: none"> • Story Lesson • Songs, Rhythmic Activity, Games • Finger Plays, Verses, Books • Books, Videos • Special Crafts
11:20 – 11:45 3:05 - 3:30	Little Kids Workout or Outdoor Play – extended outdoor play in warm weather

FINALLY.....

Thank you for sharing your children with us.
We will do all we can to give each child a happy Play School experience!
If you have any further questions or concerns please contact us here at
Sunshine Corner Play School.

777-0800, ext. 223
Lynnette Abboud
Play School Director
labboud@wkc.org

Sunshine Corner Play School
3939 – 69th Street S.W.
Calgary, AB T3H3Y1
777-0800, ext.223