

MISSION AND VISION



We are dedicated to fostering an environment in which faith, larger than our individual hearts can carry, causes us to live out life with those who have yet to hear of their place in God's redemptive story. We do not wait. We go, as equals, to value others and work with them in healthy sustainable partnerships.

VALUES

Partnership

1. Partner with God's ongoing redemptive and restorative activity in the world
2. Partner with the growing community of those who have served on Short Term Mission (STM) teams, and continue to develop the friendships established in the STM trips
3. Partner with our international friends in our joint service to the unreached and underprivileged, with an openness to learn from each other
4. Establish partnerships through organic relationships

Professional

1. Internationally educated and cross-culturally sensitive
2. Trained and prepared for effective ministry in cross cultural settings
3. Non-maleficence: first, do no harm

'Glocally' Focused

1. Global and Local focus on needs of others, both there (foreign) and here (local)
2. We look for opportunities to serve others rather than waiting for the requests to find their way to us

'Good' Religion (Isaiah 58:6-9, James 1:27)

1. Women and widows
2. Orphans and vulnerable children
3. The sick (HIV/AIDS)

Spiritual Formation

1. To know God more
2. To know ourselves more
3. To advance our own walk in faith

Entrepreneurial

1. Serve the most marginalized and poorest regions of high need countries
2. Serve where other agencies are not yet involved

Justice

1. We give freely to others regardless of race, colour or creed
2. Valuable faith is faith that benefits those without faith



PARTNERS



HANDS AT WORK, AFRICA Congo Operations

Westside's partnership with Hands at Work Africa began in January 2005, when our first Short Term Teams headed to South Africa and Zambia. We began our financial commitment to the work in the DRC in 2007. This \$36,000 annual commitment continues to provide food for the children at both the school that Westside build in the Toyota Quarter, as well as a high needs area school in Kikula. This money also funds activities that include: Church Leader Workshops, Care Worker Training, and Agricultural Development which helps both local Care Workers and orphaned children grow their own food, as well as operational funds for the Kikula Community Based Organization.



Hands at Work
AFRICA



LYNN CHOTOWETZ Hands at Work, Africa

Lynn leads the Hands at Work "Africa Team", which is a group of people referred to as Country Representatives, who are responsible for coordinating the activities in eight countries across Africa. Lynn coordinates and supports the Country Reps for South Africa, Swaziland, Malawi, and Zimbabwe, as well as representing Mozambique, the Democratic Republic of Congo, Zambia and Nigeria. His duties have grown considerably since Westside began providing Missionary Support in February 2008. Lynn is based in the Hands at Work Hub office in South Africa, but travels 50% of the time capacity building in the other 7 countries Hands at Work is in. Lynn's wife Jayme is leading the International Team using her Visual Communication skills maintaining the Hands website and carrying the message of Hands through various marketing tools.



Hands at Work
AFRICA



SEAN LAMBERT Youth With A Mission (YWAM)

Westside has been supporting Sean Lambert and his family in Mexico since 2004. Sean is the CEO of YWAM's Homes of Hope program in the Baja. YWAM Mexico has faced incredible challenges this year, with the "perfect storm" of the weak US economy, the drug cartel violence and the swine flu. Sean and his organization faced into these realities with grace and took the opportunity of the quiet months to strengthen their follow up program and hospitality process (see our STM Team section for news on Mexico).



PARTNERS



ASIAN OUTREACH

Asian Outreach

Transforming Asia, one life at a time.

Westside has been supporting Asian Outreach since 2003 through projects like the Mongolia Literacy Class and Cambodia HIV Project.

Asian Outreach's mission statement is:

Changing lives: Every person matters

Transforming communities: Practical answers for real needs

Influencing nations: Empowering and training national leaders

While some of our \$12,000 annual donation helps support administrative expenses for Asian Outreach Canada, most of our money is matched by CIDA and/or a Hong Kong matching program, and supports programs in the field.



JEFF STARKEY In His Service

Jeff (JJ) and Rachel Starkey are missionaries with In His Service, a mission outreach in North Africa equipping leaders for Christian service and church planting. Westside has been supporting the Starkeys for 11 years. They have four children.

In addition to the work of Leadership Development and supporting their students in their Church Plants, JJ and Rachel have been involved in developing various Ideas for Income Generating Projects for refugee women.

WORLD VISION

Haiti Relief



World Vision

Following the devastating earthquake in Haiti in January 2010, the Westside Missions Team wanted to donate from our crisis fund on behalf of our community. We chose World Vision who was already on the ground and deep at work to provide relief. We gave A \$5,000 donation in both January and again in May.

KINGDOM IDEA

Steve Melnichuk



Westside supported a new Missionary organization, KingdomIdea, with a one-time gift of \$15,000 to assist the Melnichuk family in their transition from England to Canada, as KingdomIdea establishes itself as a Mission Support for Eastern Europe.

MID TERM VOLUNTEERS

Mid-Term Volunteers raise their own funds



Hands at Work
AFRICA

DAVID AND MARILYN GJOSUND



The Gjosunds went to South Africa to serve with Hands at Work for a year from December 2008 to December 2009. They served as the pastoral care couple for the volunteer staff, as well as helping out with food distribution in Swaziland and in the local community of Masoyi.

JAYME CHOTOWETZ



Jayme, Lynn's wife, is on her 4th trip to Africa and has been there since February 2008. Jayme leads the International Team using her Visual Communication skills in maintaining Hands at Work's website and conveying the message of Hands through various marketing tools.

MARC DAMOUR



Marc left in February 2010 on his fourth trip to Africa with Hands at Work. On this trip, Marc expects to be posted in the field in Zimbabwe supporting the local Hands at Work volunteer staff with project and financial management. Marc's latest commitment is for two years.

COLETTE DEJORDY



Colette left for South Africa to help out at Hands at Work in late April and will be there until end of July. Colette will see how she can best serve and in which country, before making a more long-term commitment.

SHORT TERM MISSIONS' TEAM: ENSENADA, MEXICO

OCTOBER, 2009

Team members raise personal funds: \$1,500



Every year, Westside mobilizes teams to the YWAM San Diego Baja base to build a house in the Homes of Hope program. Each house costs \$5000 and is completed in two days. The trip requires a 5 day commitment for participants. Our team of ten built a house for Juan, Sophia and Samuel (2yrs), a family that met the criteria. They had been sleeping on a couch in his sister's trailer for three years. Eight people lived here and it was becoming increasingly challenging. Team members have the option to contribute anonymously to meet some immediate needs (beds are top on the list). At the end of the second day, the keys are given to the family. The next trip is being planned for October 2010.



SHORT TERM MISSIONS' TEAM: SOUTH AFRICA

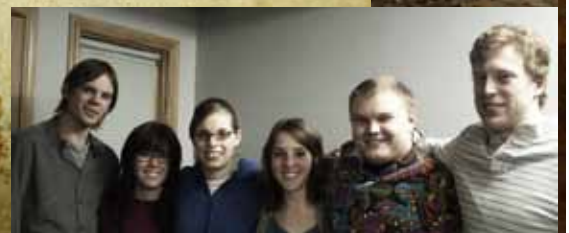
MAY, 2010

Team members raise personal funds: \$4,500



Hands at Work
AFRICA

On April 29th, six young adults went to Bushbuckridge, South Africa for three weeks to continue our partnership with Hands at Work in Africa. The team supported the volunteers that run the Community Life Center which acts as hub for all of the activities that Hands is a part of, including home based care, food sustainability and basic education programs. The team's focus was orphan care, helping to bolster after-school education, emotional support and safe play programs.



LOCAL OUTREACH

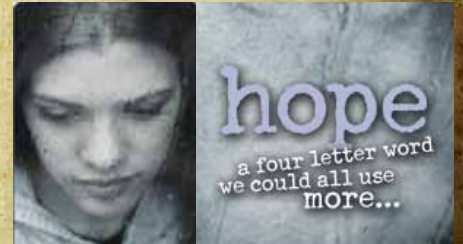
PARTNERS

Westside financially supports a number of Calgary agencies:

Calgary Pregnancy Care Centre, Feed the Hungry, Rockyview Grief Support Program, and Project Homeless Connect - Calgary Homeless Foundation, Tenants at Baker House (a Calgary Housing Corporation Apartment Complex).

CPCC

We have partnered with the **Calgary Pregnancy Care Centre** for the past 9 years. This has included an annual offering, maternity and children's clothing drive and providing an inventory of journals and bibles for their programs. Several members of the Westside community have volunteered at the centre over the years. Westside offers the centre's Gamma Girls program to the youth of our community on a yearly basis.



CALGARY HOUSING CORPORATION

Westside has participated in many activities with the **Calgary Housing Corporation** and **Calgary Neighborhood Services**. These have included a Christmas Party at **Baker House** for the past three years. Baker House is home to many who have recently been homeless and a large number of mentally ill tenants. Westside volunteers help with serving the dinner and door prizes, as well as have a wonderful time socializing with the tenants. Each year we provide gift bags filled with necessities for the men and a group of Real Estate women shop and fill gift bags for the women. This year, Kathy Sissons once again did our shopping and the Senior High youth prepared the bags at Paradox.



BRENDA'S HOUSE

A new initiative of the **Children's Cottage** is **Brenda's House**, a shelter for homeless families in transition. This Christmas, Westside Children's Ministry, in partnership with Sonshine Playschool, provided two car loads of toys to the families of the shelter. There are volunteer opportunities for families at Brenda's House, and Jeremy Klager may be initiating activities in the coming year.



MUSTARD SEED

Unedited, the young adult community at Westside, participates monthly at the **Mustard Seed** shelter on a Saturday night. The group is there to engage with the clients in conversation, a game of cards or a movie.



LOCAL OUTREACH

Our relationship with Feed the Hungry began in the fall of 1999. Every August, Westside volunteers prepare and serve a meal for the homeless in Calgary through the 'Feed the Hungry' program. Each sponsored meal costs \$4,000 and serves between 600 to 700 meals. Chantelle Carley is our coordinator and can be reached at feedthehungry@wkc.org to sign up for this summer's event.



FEED THE HUNGRY

We offer qualified financial assistance on an as-needed basis throughout the year. Most of the situations that we respond to are pre-screened by agencies in the city who call us when the situation is critical, however does not meet the criteria for existing funding. The majority of these requests come through West Central Resource Centre which is the family support centre for Calgary in our area. A recent example was a single mother who would lose her developmentally handicapped child to foster care if he did not attend a special school to meet his needs, however she did not have a car and the commute would be two hours both to drop him off and pick him up with another toddler in tow. Westside provided the \$1600 for the Handibus for the child to get to school until the end of this school year. There have been several opportunities to build relationship from what may have been a one off response. For example, a single mom from the Sudan who we responded to with grocery vouchers three years ago, is now being supported on a monthly basis by a dental office coordinated by a member of Westside. Three friends stay in touch with a Congolese family who we moved 4 years ago. At Christmas time, Westside Benevolence reaches out to families within the agencies that we work with throughout the year to make sure that children are provided for.

BENEVOLENCE

LOCAL OUTREACH TEAM

A new Local Outreach Team was formed this spring and will be launching our vision and strategy for reaching out to our city in the fall of 2010.

Cameron Bailey
Donna Fairbrother
Larry Mielnichuk
Nicole Champagne
Sheridan McVean

EMAIL
localoutreach@wkc.org

GENERAL MISSIONS' TEAM

Cathryn Ironside
Colette DeJordy
Doug Burns
Steve Melnichuk
Tracey Lefavre

EMAIL
missions@wkc.org

BUDGET - GENERAL MISSIONS

General Missions Budget

Projected to June 30, 2010

Revenue

Total Revenue	\$125,000
---------------	------------------

Expenses

Hands at Work Africa - Congo	\$36,000
Hands at Work - Lynn Chotowetz	\$12,000
Sean Lambert - YWAM	\$12,000
Asian Outreach	\$12,000
JJ Starkey - In His Service	\$12,000
Crisis Fund - World Vision, Haiti	\$10,000
Steve Melnichuk - Kingdom Idea	\$15,000
Total Expenses	\$109,000

Carry-over to Crisis Fund	\$16,000
---------------------------	-----------------



BUDGET - LOCAL OUTREACH

Benevolence/Local Outreach Budget

Projected to June 30, 2010

Revenue

Total Revenue	\$24,000
---------------	-----------------

Expenses

Calgary Pregnancy Care Centre	\$10,000
Feed The Hungry	\$4,000
Rockyview Grief Support	\$1,000
Calgary Homeless Foundation	\$2,000
Baker House Christmas Party	\$1,200
Christmas Voucher Program	\$2,000
Benevolence Response	\$3,800
Total Expenses	\$24,000





www.wkc.org

3939 - 69 Street SW Calgary AB T3H 3Y1

ph. 403.777.0800 | fax. 403.686.7905 | e. info@wkc.org

 **westside**
king's church